

TIS Transporter



COMFORT WITHOUT COMPROMISE



Considered users, those who require:

- Postural support
- Pressure care management
- High leg elevation

Suitable for:



Home



Healthcare



Nursing and Residential Homes

The TIS Transporter is an innovation in dynamic frame and chair design.

The TIS Transporter can be fully adapted by the healthcare team in the home or on the ward. Each chair can be quickly and easily customised for different users or for an individual as their care needs change over time.

The TIS Transporter is our Tilt in Space chair which is completely mobile and hoist friendly. The unique Tilt in Space action coupled with a full range of compatible cushions provides maximum flexibility for both the carer and user. You choose the right back and leg angle, the right head rest, back rest or lateral support and the right pressure care solution for the individual you are caring for.

The TIS Transporter can be carefully reclined backwards whilst maintaining the person's hip angle. The tilt and fixed back angle allows a user's position to be varied to redistribute pressure over a larger area reducing the build up of pressure and helping to prevent tissue damage.



TIS Transporter

The TIS Transporter has an innovative and dynamic design that solves the challenge of changing care demands.

- Adapt the TIS Transporter to accommodate the user's specific comfort and pressure management needs with interchangeable seat cushions, back cushions and headrests, all constructed from a range of specialist pressure care materials.
- Support different postural requirements and vary sitting positions.
- Separately adjust the angle and the height of the legs and feet by independently changing the leg and foot rest positions.
- Choose from a range of healthcare grade fabrics suitable for infection control.
- Maintain the integrity and longevity of the chair with hygienic quick change covers and replacement cushions.
- Upgrade or replace support cushions as required to respond to changes in the user's needs or to adapt the chair for a new user.

Key features

- 1 The Push Handle comes with rubber grips and a lever to adjust the Tilt in Space position of the chair, assisted by a gas action piston. The position locks when the lever is released.
- 2 Removable back support, choose from a range of alternative solutions.
- 3 Removable seat module, choose from a range of pressure care solutions.
- 4 Independent elevating leg rest, with extending movement.
- 5 Fully adjustable foot rest, change the height and the angle for individual comfort or flip it out of the way for transfers.
- 6 Adjust the seat depth from 16 to 21" to fit the individual.
- 7 Reposition the leg rest to the required height using the leg rest release handle conveniently located on the side of the chair.
- 8 Heavy duty, lockable, swivel rubber castors.



Push handle



Removable back support



Removable seat module

Standard features



Elevating leg rest



Adjustable foot rest



Adjustable seat depth



Footrest height adjustment



Lockable rubber castors

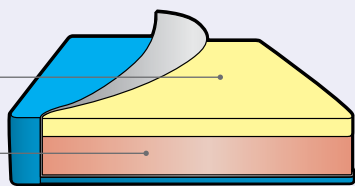
The **TIS Transporter**, the hardest working transportation chair available.
An **effective, efficient** and **value for money** solution.

Ribble Valley Recliners TIS Transporter seat options for pressure management

All cushions are covered in multi-way stretch, vapour permeable fabric which is wipeable, removable, washable at 95°C, incontinence proof and breathable.

Viscoform

- Memory foam (std)
- Reflex foam



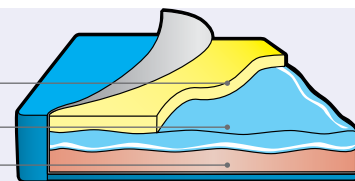
Pressure Risk **LOW MEDIUM**

For those who have good posture and mobility but are seated for greater than one hour at a time and require pressure relief and supported comfort.

This cushion has a high density foam base which offers a supportive and firm seat base with a top layer of memory foam to allow submersion into the cushion giving stability and a large surface area to reduce pressure levels.

Liquiform

- Memory foam
- Liquid gel sac
- Reflex foam



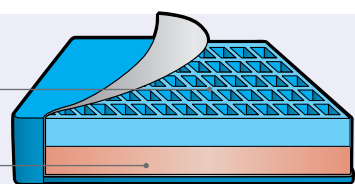
Pressure Risk **MEDIUM HIGH**

For those who have good posture and mobility but are seated for long periods of time and require pressure relief and supported comfort. Excellent for people with little fatty tissue.

This cushion has a high density foam base which offers a supportive and firm seat base topped with a fluid liquid gel in a soft silicone cover to provide high levels of pressure relief. The liquid gel helps to dissipate heat and constantly adapts to movement.

Celliform

- Gelacell mesh gel
- Reflex foam



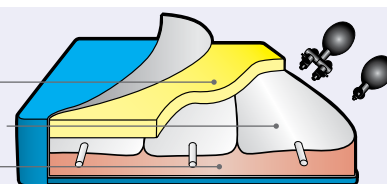
Pressure Risk **MEDIUM HIGH**

For those sitting for long periods of time with specific comfort issues such as a high risk of pressure sores and shear forces.

Gelacell's unique grid design eliminates pressure points by contouring in response to the transfer of weight and evenly distributing pressure. The molecular structure restricts absorbed heat and keeps the seat cooler and fresher.

Airform

- Memory foam
- 3 x manual air cushions
- Reflex foam



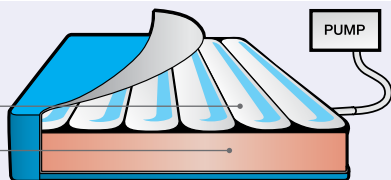
Pressure Risk **HIGH**

For those who have good postural position but who are unable to alter their own position easily and require high level pressure care.

This cushion gives the benefit of an air cushion without the sensation of alternating changes in air pressure.

Dynaform

- Westmeria alternating air cushion
- Reflex foam



Pressure Risk **VERY HIGH**

For those at very high risk of developing pressure sores or a history of sores where the highest priority is to prevent further pressure damage.

For users only up to 20 stones (120kg). The Dynaform cushion is a dynamic alternating air cushion which constantly changes the air levels within its many air cells to recreate the effect of pressure relieving and prevent pressure build up.

Air cell features

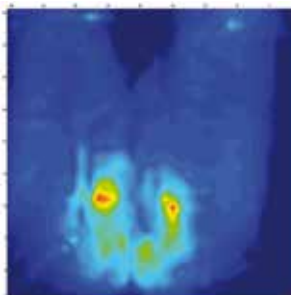
- 6 dynamic cells 4" (10cm) wide
- 3 cell cycle repeated every 9 minutes

Please note the Dynaform cushion does need an electric supply at all times to operate.

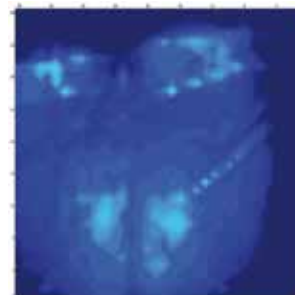
Pressure mapping

All Ribble Valley Recliners seat designs undergo rigorous pressure mapping testing to ensure we achieve the highest standards possible. A mat of pressure sensors is applied to the seat. The matrix of sensors quantifies the surface pressure between a person and the support surface the chair provides. The results provide a map for analysis by clinicians who can then advise our design teams. The aim is to ensure that pressure is as evenly distributed as possible and that the maximum area of the thighs and buttocks is supported as at low an interface pressure as possible.

Poor pressure distribution



Good pressure distribution



Pressure Map for individual: Gender: Female; Age: 35 Years; Weight: 10.5 Stones.

Note: Users with pressure relief needs or concerns are advised to seek the advice of a tissue viability clinician on the most suitable level of pressure relief for their medical requirements.

Back cushion options for enhanced support



Waterfall back cushion

The Waterfall back is constructed from three waterfall cushions that can all be repositioned for the user's comfort. This backrest style is particularly popular to accommodate users with a spinal kyphosis (forward curvature).



Comfort lateral back cushion

The Comfort Lateral back has a soft removable cushion for lower back and side lumbar support, without being restricted but offering midline support.



Support lateral back cushion

The Support Lateral back provides firm foam lateral lumbar and midline support with the comfort of a large head rest. The soft fibre filling in the pillow headrest gives you the flexibility to change the firmness for the user's comfort.



Large profile headrest with waterfall back

The Profile Waterfall back has two lower waterfall cushions for lower back support and a profile shaped headrest to provide additional support for the shoulder, neck and head.



Large profile headrest with comfort lateral back

The Profile Comfort Lateral back provides midline support but with soft filled fibre laterals for deep comfort. The profile shape headrest provides support for those with limited head control. Ideal option for users requiring additional support but with high pressure relief needs.



Large profile headrest with support lateral back

The Profile Support Lateral back provides firm foam lateral lumbar and midline support with the comfort of a large profile head rest. The soft fibre filling in the profile headrest is designed to help support the head for midline control and provide a comfortable headrest.

Optional extras

- Full arm caps.
- Honeycomb gel in arm rests.
- Replacement covers.



Lapstrap and pad



D rings

Headrest options



Small profile headrest



Head roll



Midline headrest



Small head pillow

Available sizes

	SMALL	MEDIUM	LARGE
LEG REST HEIGHT self-adjusting	16-20" (41-51cm)	16-20" (41-51cm)	16-20" (41-51cm)
SEAT WIDTH	16" (41cm)	18" (46cm)	20" (51cm)
SEAT DEPTH self-adjusting	16-21" (41-53cm)	16-21" (41-53cm)	16-21" (41-53cm)

Weight limit

The TIS Transporter has a weight limit of 25 stones.

Fabric options

- Waterproof
- Anti MRSA
- Anti Bacterial
- Anti Fungal
- Crib 5
- Bleach cleanable
- Vinyl.

The fabric displayed on the chair in the images is for illustration only and is no longer available.

Guarantees

The Ribble Valley Recliners TIS Transporter comes with the following guarantees:

- 2 Year warranty on metal work.
- 1 Year warranty on all fabric, foam and the frame.*

**If you have any questions about the TIS Transporter,
please contact us on: 01254 399400 or at sales@ribblevalleyrecliners.co.uk**

*Full terms and conditions available upon request



Thank you for supporting British manufacturers

Ribble Valley Recliners Ltd reserves the right to modify or change the specification without prior notification. For terms and conditions of sale and or agreement please refer to your supplier.

Ribble Valley Recliners Ltd.

244 Whalley Road, Clayton Le Moors,
Accrington, Lancashire. BB5 5HG

Telephone: 01254 399400

Email: sales@ribblevalleyrecliners.co.uk

www.ribblevalleyrecliners.co.uk