

Derwent



COMFORT WITHOUT COMPROMISE



Considered users, those who require:

- Postural support
- Pressure care management
- Portering
- High leg elevation

Suitable for:



Home



Healthcare



Nursing and Residential Homes

We have built a dual tilt in space mechanism into our Derwent chair providing a range of posture positive positions, both in a full range of gentle recline positions and in supported rise positions as the chair tilts and lifts a user forward into a standing position. The Derwent encourages and supports the independence, choice and control of users.

- Adapt the Derwent for different posture needs with six different interchangeable waterfall or lateral back styles.
- Support different posture requirements and positions with alternative headrests and pillows.
- Manage specific comfort and pressure management needs with interchangeable seat cushions constructed from a range of specialist pressure care materials.
- Control infections by choosing from our range of healthcare grade fabrics.
- Maintain the highest hygiene standards with quick change covers and replacement cushions.
- Purchase replacement or new support cushions as needed to extend the use of the Derwent.



Derwent

COMFORT WITHOUT COMPROMISE

As with all our fully adaptable health chairs, the Derwent comes with the same flexible choices in pressure care and support, enabling practitioners to design and fit each chair to individual needs and to react quickly to changing needs.



Key features

- 1 The Push Handle comes with rubber grips and hook for the handset controller.
- 2 The electric rise Dual Tilt in Space mechanism and recline is controlled by an easy to use handset controller.
- 3 Separate waterfall back cushions can be individually repositioned and adjusted for comfort and support.
- 4 Back cushions can be removed and replaced with more supportive lateral styles.
- 5 The seat depth can be adjusted with 1" or 2" adjuster pads that fit behind the back cushions.
- 6 Choose internal seat cushions from a range of pressure care management solutions.
- 7 The chair is upholstered in a vapour permeable multi-way stretch fabric, to aid pressure care. The fabric is washable at 95°C and available in a range of colours.
- 8 The Derwent comes with four heavy duty lockable castors. Must be braked at all times before using the rise.

This chair can be upgraded with a rechargeable battery system providing freedom from an electricity supply when in use.



Push handle

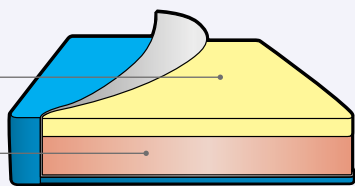
The **Derwent** - electric rise and recline, individual **choice** and **control** solutions

Ribble Valley Recliners Derwent seat options for pressure management

All cushions are covered in multi-way stretch, vapour permeable fabric which is wipeable, removable, washable at 95°C, incontinence proof and breathable.

Viscoform

- Memory foam (std)
- Reflex foam



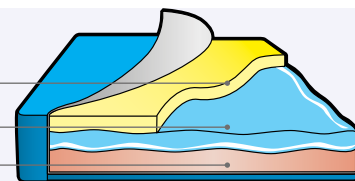
Pressure Risk **LOW MEDIUM**

For those who have good posture and mobility but are seated for greater than one hour at a time and require pressure relief and supported comfort.

This cushion has a high density foam base which offers a supportive and firm seat base with a top layer of memory foam to allow submersion into the cushion giving stability and a large surface area to reduce pressure levels.

Liquiform

- Memory foam
- Liquid gel sac
- Reflex foam



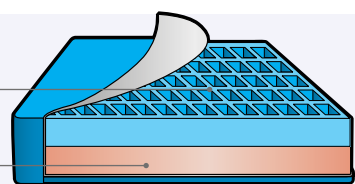
Pressure Risk **MEDIUM HIGH**

For those who have good posture and mobility but are seated for long periods of time and require pressure relief and supported comfort. Excellent for people with little fatty tissue.

This cushion has a high density foam base which offers a supportive and firm seat base topped with a fluid liquid gel in a soft silicone cover to provide high levels of pressure relief. The liquid gel helps to dissipate heat and constantly adapts to movement.

Celliform

- Gelacell mesh gel
- Reflex foam



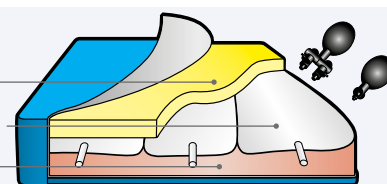
Pressure Risk **MEDIUM HIGH**

For those sitting for long periods of time with specific comfort issues such as a high risk of pressure sores and shear forces.

Gelacell's unique grid design eliminates pressure points by contouring in response to the transfer of weight and evenly distributing pressure. The molecular structure restricts absorbed heat and keeps the seat cooler and fresher.

Airform

- Memory foam
- 3 x manual air cushions
- Reflex foam



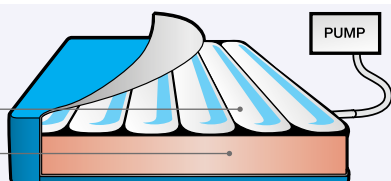
Pressure Risk **HIGH**

For those who have good postural position but who are unable to alter their own position easily and require high level pressure care.

This cushion gives the benefit of an air cushion without the sensation of alternating changes in air pressure.

Dynaform

- Westmeria alternating air cushion
- Reflex foam



Pressure Risk **VERY HIGH**

For those at very high risk of developing pressure sores or a history of sores where the highest priority is to prevent further pressure damage.

For users only up to 20 stones (120kg). The Dynaform cushion is a dynamic alternating air cushion which constantly changes the air levels within its many air cells to recreate the effect of pressure relieving and prevent pressure build up.

Air cell features

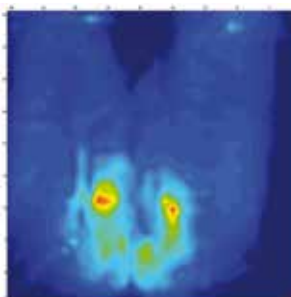
- 6 dynamic cells 4" (10cm) wide
- 3 cell cycle repeated every 9 minutes

Please note the Dynaform cushion does need an electric supply at all times to operate.

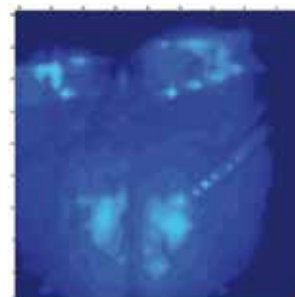
Pressure mapping

All Ribble Valley Recliners seat designs undergo rigorous pressure mapping testing to ensure we achieve the highest standards possible. A mat of pressure sensors is applied to the seat. The matrix of sensors quantifies the surface pressure between a person and the support surface the chair provides. The results provide a map for analysis by clinicians who can then advise our design teams. The aim is to ensure that pressure is as evenly distributed as possible and that the maximum area of the thighs and buttocks is supported as at low an interface pressure as possible.

Poor pressure distribution



Good pressure distribution

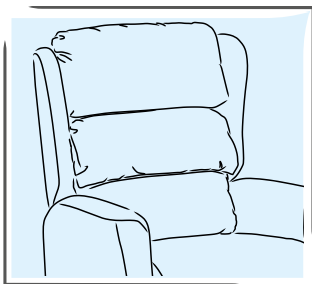


Pressure Map for individual: Gender: Female; Age: 35 Years; Weight: 10.5 Stones.

Note: Users with pressure relief needs or concerns are advised to seek the advice of a tissue viability clinician on the most suitable level of pressure relief for their medical requirements.

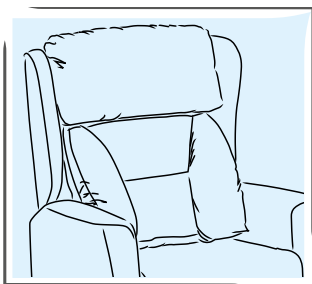
Chair options

Back cushion options for enhanced support



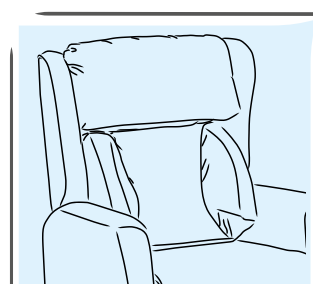
Waterfall back cushion

Individual waterfall cushions, which are fully adjustable to accommodate maximum postural support.



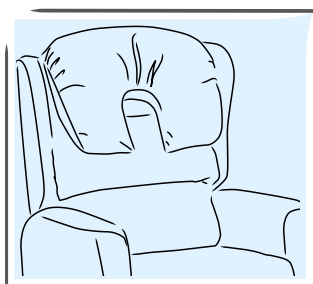
Comfort lateral back cushion

Soft fibre filled removable lateral cushion for lower back and side lumbar support, without feeling restricted.



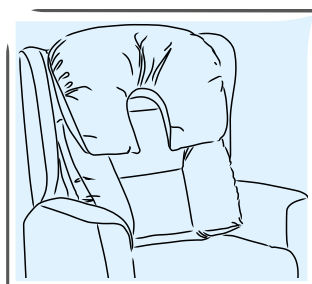
Support lateral back cushion

A foam filled back providing firmer lateral support with a soft fibre filled headrest.



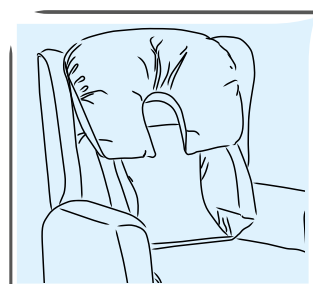
Large profile headrest with waterfall back

Recommended for those with limited head control and requiring a soft adjustable lumbar support.



Large profile headrest with comfort lateral back

Recommended for those with limited head control and requiring soft lateral support without feeling restricted.



Large profile headrest with support lateral back

Recommended for those with limited head control and requiring firm foam lateral lumbar and midline support.

Headrest options



Small Head Pillow



Head Roll



Small Profile Headrest



Midline Headrest

Care features



Easy replace covers. Quick to change and replace for care and cleaning.



Interchangeable seat cushions to adapt the Derwent for each new user's pressure care or support needs.



Flexible positioning of the three waterfall cushions to get the shape of the back right for each user, with adjustable back padding in all cushions.

Available sizes

	SMALL	MEDIUM
SEAT HEIGHT	19" (46cm)	19" (46cm)
SEAT WIDTH	18.5" (46cm)	20.5" (51cm)
SEAT DEPTH	20" (51cm)	20" (51cm)

Weight limit

The Derwent has a weight limit of 20 Stones.

Fabric options

- Waterproof
- Anti MRSA
- Anti Bacterial
- Anti Fungal
- Crib 5
- Bleach cleanable
- Vinyl

The fabric options shown in this brochure: Highland Eva Thistle 642 outer with Plain Black vapour permeable stretch seat and back cushion covers.

Guarantees

The Ribble Valley Recliners Derwent comes with the following guarantees:

- 2 Year electrical warranty for the recliner mechanism.
- 1 Year warranty on alternating seat cushions.
- 1 Year warranty on the upholstery and frame*.

**If you have any questions about the Derwent,
please contact us on: 01254 399400 or at sales@ribblevalleyrecliners.co.uk**

*Full terms and conditions available upon request



Thank you for supporting British manufacturers

Ribble Valley Recliners Ltd reserves the right to modify or change the specification without prior notification. For terms and conditions of sale and or agreement please refer to your supplier.

Ribble Valley Recliners Ltd.

244 Whalley Road, Clayton Le Moors,
Accrington, Lancashire. BB5 5HG

Telephone: 01254 399400

Email: sales@ribblevalleyrecliners.co.uk

www.ribblevalleyrecliners.co.uk Tel: 01254 399400